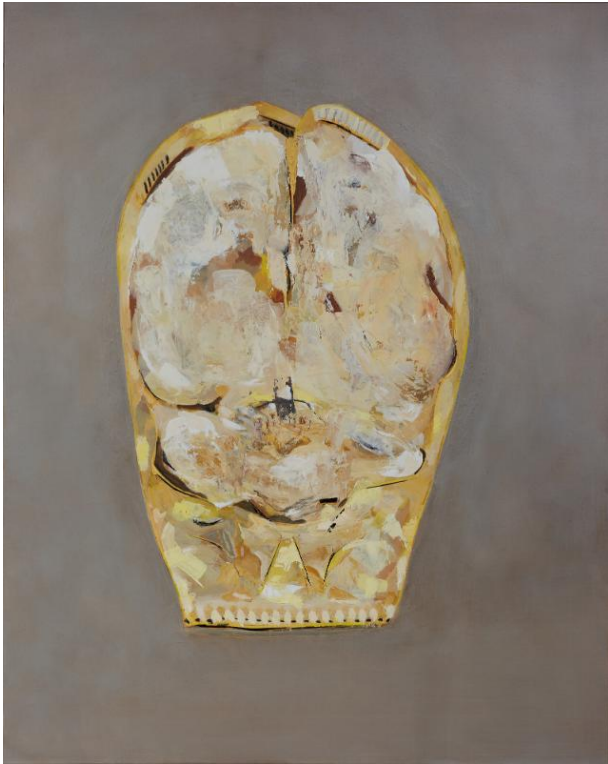


Basic Detail Report



Sun

Date

2020

Primary Maker

Walshe, Casey

Medium

Oil on canvas

Description

Casey Walshe's paintings are the result of a consistent and meditative working method. They bring to their practice a near ascetic sense of focus in which the superficial distractions of the mind can be temporarily overcome, allowing for a deeper connection to alternative rhythms of the body. Before any painting takes place, they begin with the study of the body, primarily the

human heart and lungs, during days spent looking at preserved specimens housed in the Anatomy Room at The Royal College of Surgeons, Dublin. During the research process, Walshe draws these organs from 'life', quickly and in pencil, making reams of studies that, in their own words, 'feed' the paintings, so much so that the boxy lines of the notebook are echoed as flat careful planes of colour in the finished works. By contrast, the hearts or lungs, strangely similar in shape, are painted in with a lively hand, using a palette knife to build up movement and energy. The disparity sets up a sense of visual and symbolic tension between these opposing layers; the inanimate and the vital. Working on as many as ten paintings simultaneously, they bring them forward together in waves, each a development of a specific sketch, enlivened their physical and mental dedication. Painting in nourishing earthy tones, soft greys and golds against heavy reds and browns bringing to mind the gentle hues and textures of the country's bogs, they are also influenced by the work of Irish painters of an earlier generation such as Cecily Brennan, Patrick Graham and Camille Souter. Having recently spent a while living in the west of Ireland, Walshe's palette has grown brighter and more restful; a development they attribute to the different quality of the light and the sudden expansion in their sense of space and time. Given the state of reverie from which they feel the works emerge, it is unsurprising that the cadence of a more subdued way of life has found its way through. Embarking from a cerebral and highly specific starting point, their energy is something quite far from their clinical origin

Dimensions

Object: 100 × 80 cm